

# Econotrol™ ET2S12V-PT1

**LPG Additive Injector with Additive Tank, Suction, Discharge, Wire, Valves and Fittings. Great for LPG Motor and Cutting Fuel Additives. Unit operates on 12 Volt DC and is Specifically Designed for Easy Installation on a Bobtail.**



This Injector is made to Inject Additives into Propane. The Injection of the Additive can take Place at the LPG Meter or with an Additive Hose Reel and an Injection Assembly for Injection at the Point of Delivery. The All Electric Computerized Control System and Pump which Automatically Ratios Blends at 100% of set Ratio. A Backlighted Liquid Crystal Display provides Rate Of Flow Indication and Totalization of Both Main Flow and Blended Additive. An optional IP assignable 833 MHZ remote management package includes Docking Station, Transmitter, Total Main Flow, Total Additive Flow, Run Time, Customer I.D. Numbers, Date & Time of transactions, Error Codes, Tank Level and the ability to change the ratio and operational parameters locally or remotely from any PC.



*Intelligent  
flow systems  
that measure up!*

[www.economycontrols.com](http://www.economycontrols.com)

*Economy Controls*  
CORPORATION  
9801 Gravois Road  
St. Louis, MO 63123-4205 USA  
1-800-350-9797  
314-544-3700

## FLOW COMPUTER

**Data Entry:** 16 Function sealed Tactile Membrane Keypad with MENU selection and on screen instructions provide easy to understand messages (Audio & Video Annunciation) IP assignable and remotely manageable with resets.

**Display:** Large 4 line x 20 character "Supertwist" Liquid Crystal Display with adjustable contrast

**Enclosure:** NEMA 4X & 12 Fiberglass reinforced Polyester, UL listed, 13 3/16" H x 11 3/16" W x 6 5/8" D (335mm x 285mm x 168mm) Weight: 7 Lbs. (22.04kg)

**Temperature:** 0 to 50 deg. C (operating) -25 to +70 deg. C (storage)

### STANDARD FEATURES

MENU selection and on screen instructions provide easy to understand messages  
Flow, Calibrate, Inventory, & Alarm MENUS  
LoFlo Alarm provides missing pulse detection  
Run, Set Point, Rate of Flow, Total, &  
Inventory displays of both Additive and LPG while running

Totalizer, cumulative & resettable  
Calibration on command by entering + or - error  
Socket type processor provides for ease in program changes or upgrades

Remote start/ stop

Non-Volatile memory retains all data on power loss for ten years

Available in International Languages

Two year warranty

### Liquid Side:

All seals are Teflon or Industrial Viton. Units are wet tested and pressure tested to 150#. Recommended maximum operating pressure not to exceed 150 PSIG.

**Pump:** Piston Type Rated 0 - 150 psi.  
Variable Speed Plus Automatic Start / Restart Compensates for any Flow Variation.

**Tank:** 5052 ALuminum Alloy Tank NMMA Approved for pressure, motion, impact & fire resistance. Bathed in acid to eliminate any contamination that might weaken welds. Radius bent corners (not welded) See Drawing ET30-12.2

## Electrical

**This product is classified by Underwriters Laboratories Inc. as to Drive Control components, Relays, Power Supply, Enclosure, Wire, motor and Fittings.**

### Motor

**UL Listed** Explosion Proof 1/3 HP 12Volt DC motor and Drive. Non AOP Motor. (On motor overheat unit shuts off and local restart is required).

### Flow Meter

UL Listed and or equivalent approval for NEMA 4, 7 and 9. Solid state pulse transmitters with 0-5 VDC pulse train.

### OPTIONS

In cab seat mount computer

In cab dash mount computer

Injection assemblies

Hose reel

Explosion Proof Electrical Computer (See ET3X)

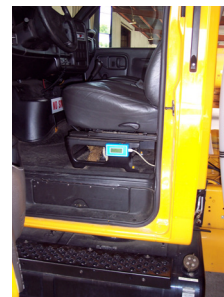
IP Address for remote management

In line pressure display/ Low tank level shut down

Analog and digital inputs and outputs



In Cab Computer



Side Seat Mount



Hose Reel and Injection Assembly

[Contact Us About This Product](#)

[Visit us at www.economycontrols.com](http://www.economycontrols.com)